

## 1. Identification

**CAS Number:**

N/A

**Catalogue Number:**

R700502

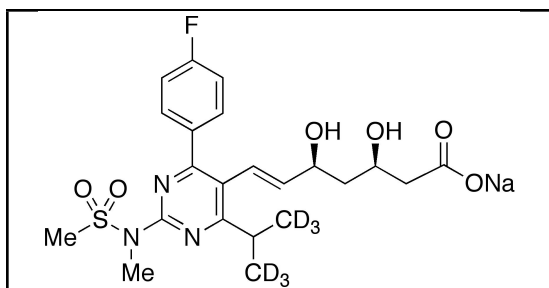
**Product:**

Rosuvastatin-d6 Sodium Salt

**Synonyms:**

7-[4-(4-Fluorophenyl)-6-(1-methylethyl-d6)-2-[methyl(methylsulfonyl)amino]-5-pyrimidinyl]-3,5-dihydroxy-6-heptenoic Acid Sodium Salt;

**Structure:**



**Molecular Formula:**

C<sub>22</sub>H<sub>21</sub>D<sub>6</sub>FN<sub>3</sub>NaO<sub>6</sub>S

**Molecular Weight:**

509.56

**Source of Product:**

Synthetic

## 2. Analytical Information

**Lot Number:**

2-WEN-131-1

**Melting Point:**

189.5 - 191.0°C (dec)

**Boiling Point:**

N/A

**Atmosphere:**

Inert Gas

**Appearance of Product:**

White Solid

**Solubility**

Methanol, Water

**Method for Determining Identity:**

<sup>1</sup>H NMR (D<sub>2</sub>O), <sup>19</sup>F NMR (D<sub>2</sub>O) and MS

**Stability**

Hygroscopic

**Purity:**

Chemical Purity: 96%

Isotopic Purity: 99.8%

**Long Term Storage Condition:**

Hygroscopic, -20°C Freezer, Under inert atmosphere

**Additional Information:**

TLC Conditions: C<sub>18</sub>; Methanol : Water = 1 : 1; Visualized with UV and AMCS; Single Spot, R<sub>f</sub> = 0.40.

<sup>1</sup>H NMR, <sup>19</sup>F NMR and MS conform to structure.

Elemental Analysis: (Found) %C: 50.08, %H: 5.56, %N: 7.88; (Calculated) %C: 51.86, %H: 5.34, %N: 8.25

Sodium Content: 5.20%

Specific Rotation: +18.9° (c = 0.24, 50% Methanol in Water)

Water Content: 1.86% by Karl Fischer

Normalized Intensity: d<sub>0</sub> = 0.02%, d<sub>1</sub> = 0.02%, d<sub>2</sub> = 0.03%, d<sub>3</sub> = 0.01%, d<sub>4</sub> = 0.03%, d<sub>5</sub> = 0.66%, d<sub>6</sub> = 99.23%

Contains 1% of Ethyl Acetate.



Philip Chan, Head of Quality Assurance

**QC Test Date**

September 16, 2014

**Retest Date**

September 14, 2017